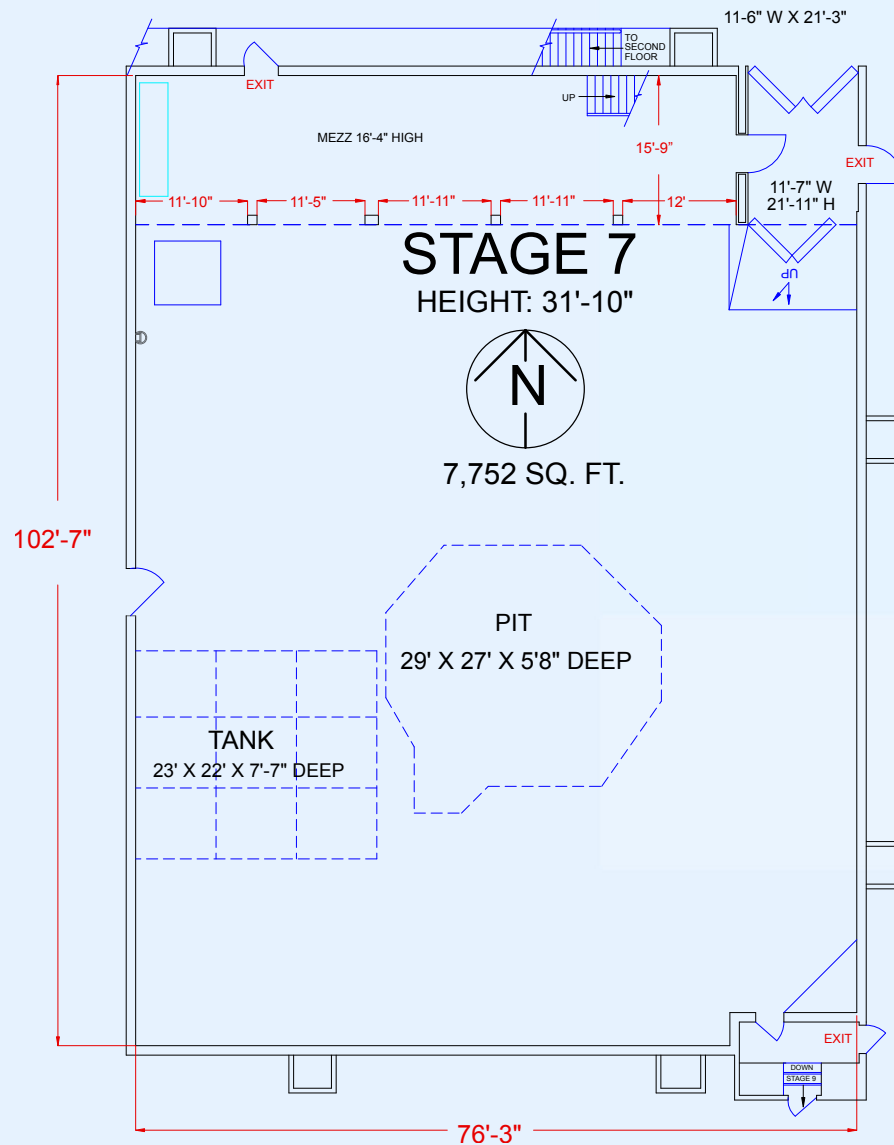
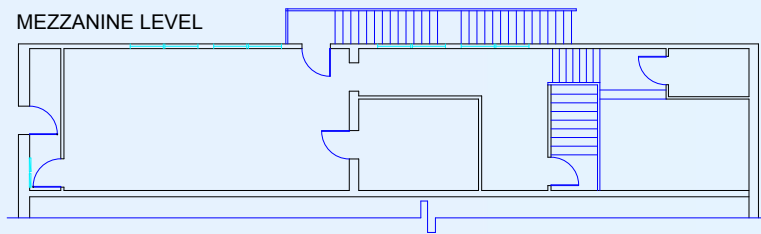


STAGE 7

MEZZANINE LEVEL



Stage Size:

76' x 102' (7,752 square feet)
height 31'

Electrical:

AC Power: 1 can, 3600 amps 120/240 volts, 3 circuits.

Pits:

- Large irregular shaped earthen pit (29' x 27' x 5'-8" deep)
- Concrete pit: (23' x 22' x 7'-7" deep) – does not hold water

Permanent Fall Protection:

Horizontal Lifeline

Telcom:

- High Speed Internet available
- Fiber Optic: 24 strands multimode; 12 strands single mode (to main distribution frame)

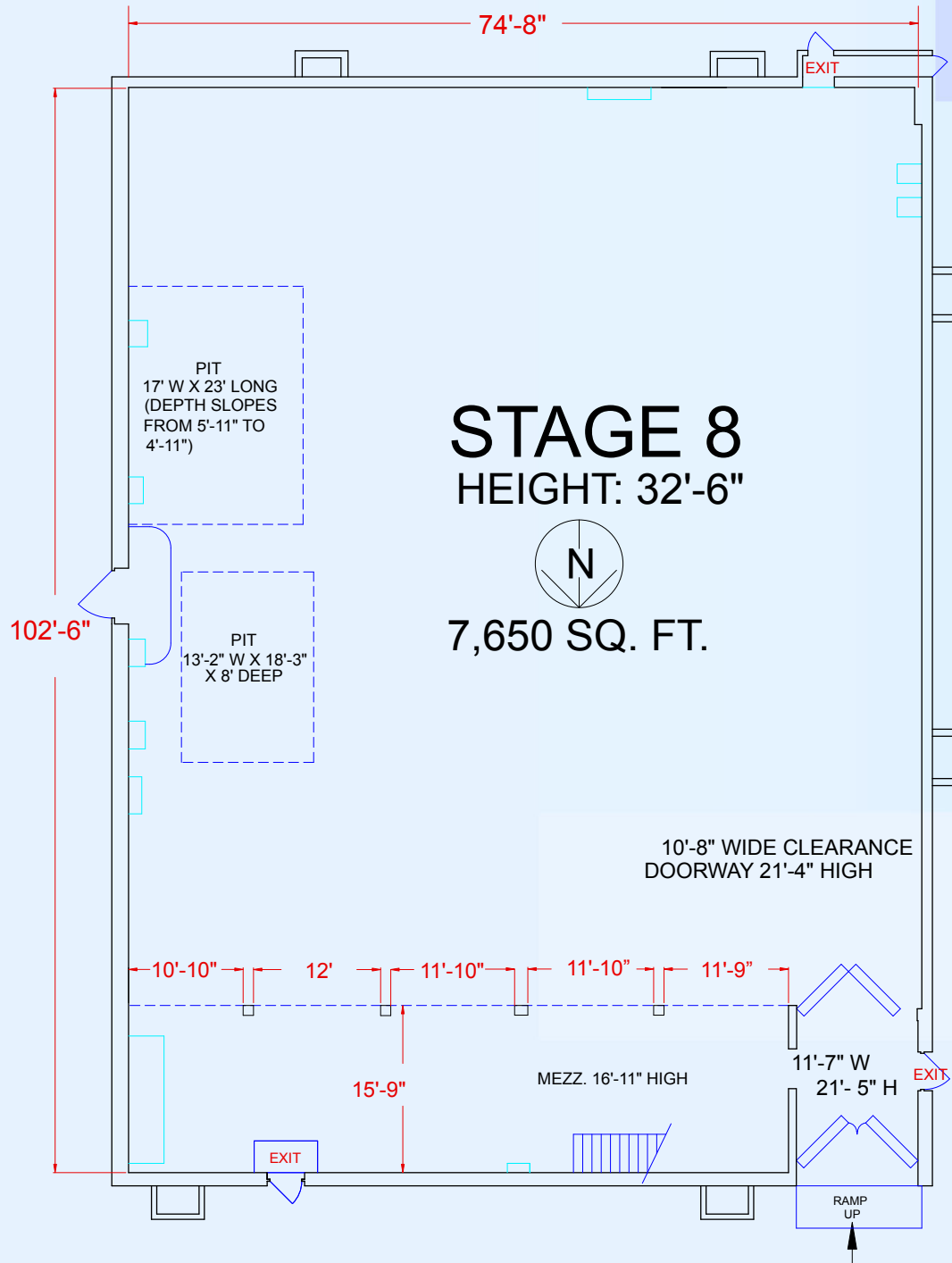
Miscellaneous

- Top braces on each side of stage affect height
- Lose 15' in length due to columns
- Large pit in center with 4 passive vents directly through stage floor
- Man door into stage 8 & hallway to stage 9
- Catwalks & wooden grid
- Floors: raised wooden (some concrete areas)

* Stage dimensions have been rounded to nearest foot



STAGE 8



Stage Size:

75' x 102' (7,650 square feet)
height 32'

Electrical:

AC Power: 1 can, 3600 amps 120/240 volts, 3 circuits.

Pits:

- Earthen pit (13'-2" x 18'-3" x 8' deep)
- 17' x 23' (depth slopes from 5'-11" to 4'-11") – does not hold water

Permanent Fall Protection:

Horizontal Lifeline

Telcom:

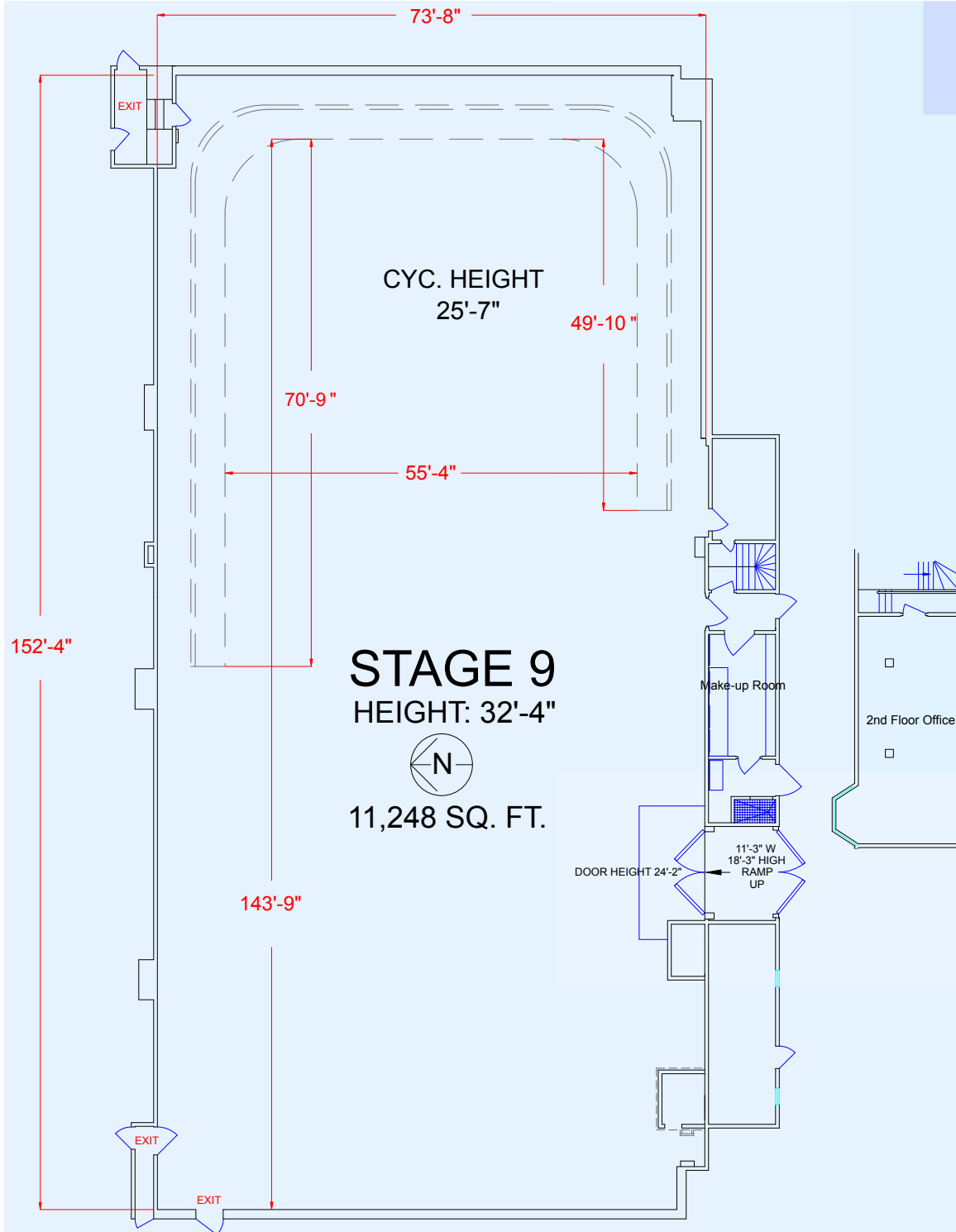
- High Speed Internet available
- Fiber Optic: 24 strands multimode; 12 strands single mode (to main distribution frame)

Miscellaneous:

- Top braces on each side of stage affect height
- Lose 15' in length due to columns
- Man door into stage 7 & hallway to stage 9
- Top braces on each side of stage affect height
- Catwalks & wooden grid
- Floors: raised wooden (some concrete areas)

* Stage dimensions have been rounded to nearest foot

STAGE 9



Still Photography Stage

Stage Size:

74' x 152' (11,248 square feet)
height 32'

Cyclorama:

Three wall hard cyc; cove measures: 70'-9" x
55'-4" x 49'-10" (25' high)

Support Space:

Wardrobe, dressing area, private restroom with
glass enclosed shower, upstairs office with stage
overlook, sound system, catering available

Electrical:

AC Power: 1 can, 7200 amps 120/240 volts, 6
circuits.

Telcom:

- High Speed Internet available
- Fiber Optic: 24 strands multimode; 12 strands
single mode (to main distribution frame)

Permanent Fall Protection:

Horizontal Lifeline

Miscellaneous:

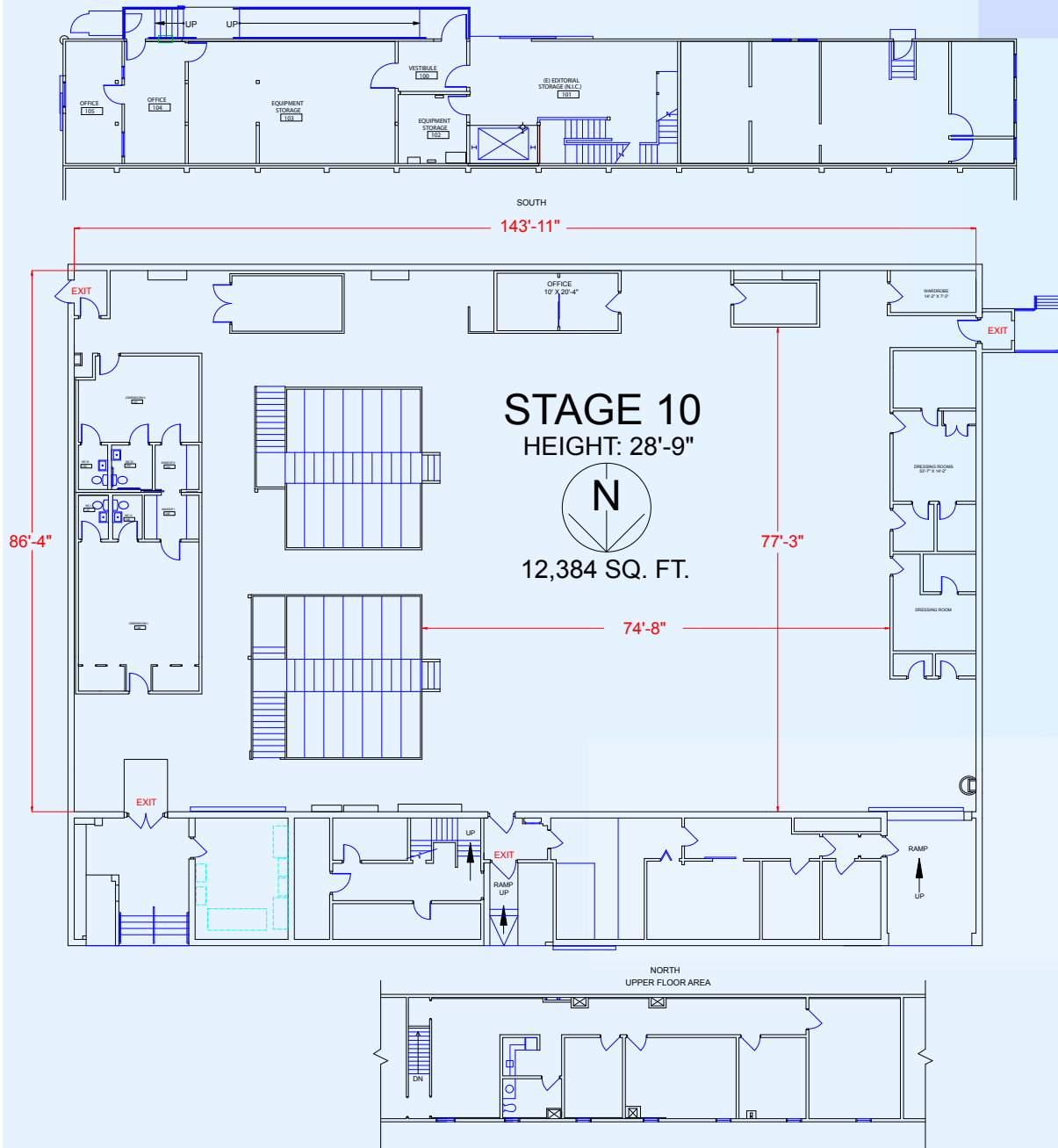
- Man door to hallway leading to stages 7 & 8
- Studio personnel must do cyc painting,
always return to white
- Catwalks & wooden grid
- Floors: wood over concrete

* Stage dimensions have been
rounded to nearest foot



10202 WEST WASHINGTON BOULEVARD
CULVER CITY, CALIFORNIA 90232

STAGE 10



Stage Size:

86' x 144' (12,384 square feet)
height 29'

Electrical:

AC Power: 2 cans, 4800 amps 120/240 volt,
2 circuits

Telcom:

- High Speed Internet available
- Fiber Optic: 24 strands multimode; 12 strands single mode (to main distribution frame)

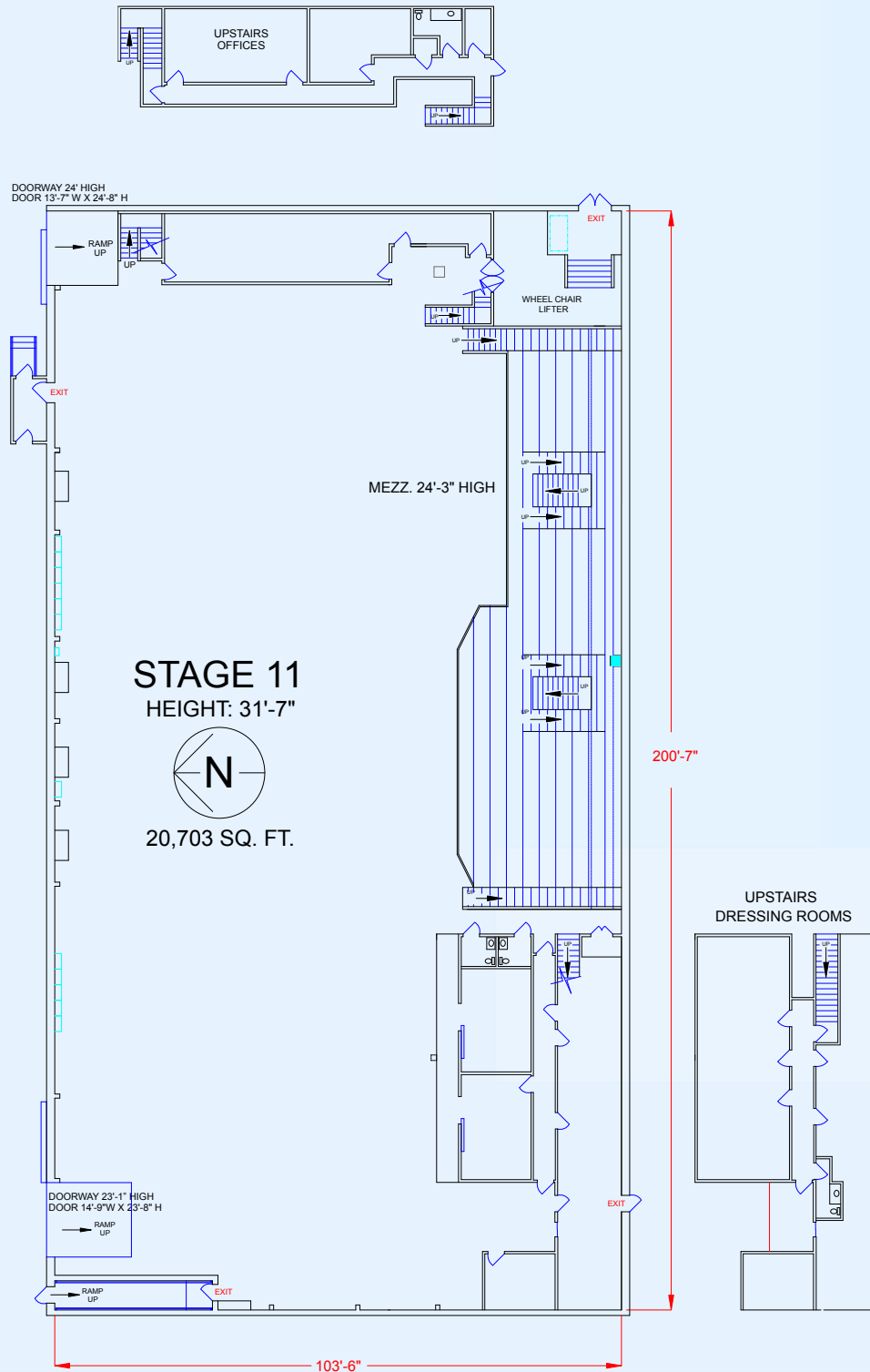
Miscellaneous:

- Only attached to Stage 11, one common wall
- Catwalks & wooden grid
- Floor: raised wooden

* Stage dimensions have been rounded to nearest foot



STAGE 11



Stage Size:

103' x 201' (20,703 square feet)
height 31

Electrical:

1 power can, 7200 amps, 120/240 volt, 6 circuits

Telcom:

- High Speed Internet available
- Fiber Optic: 24 strands multimode; 12 strands single mode (to main distribution frame)

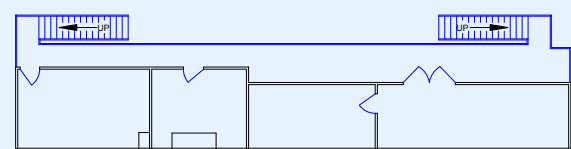
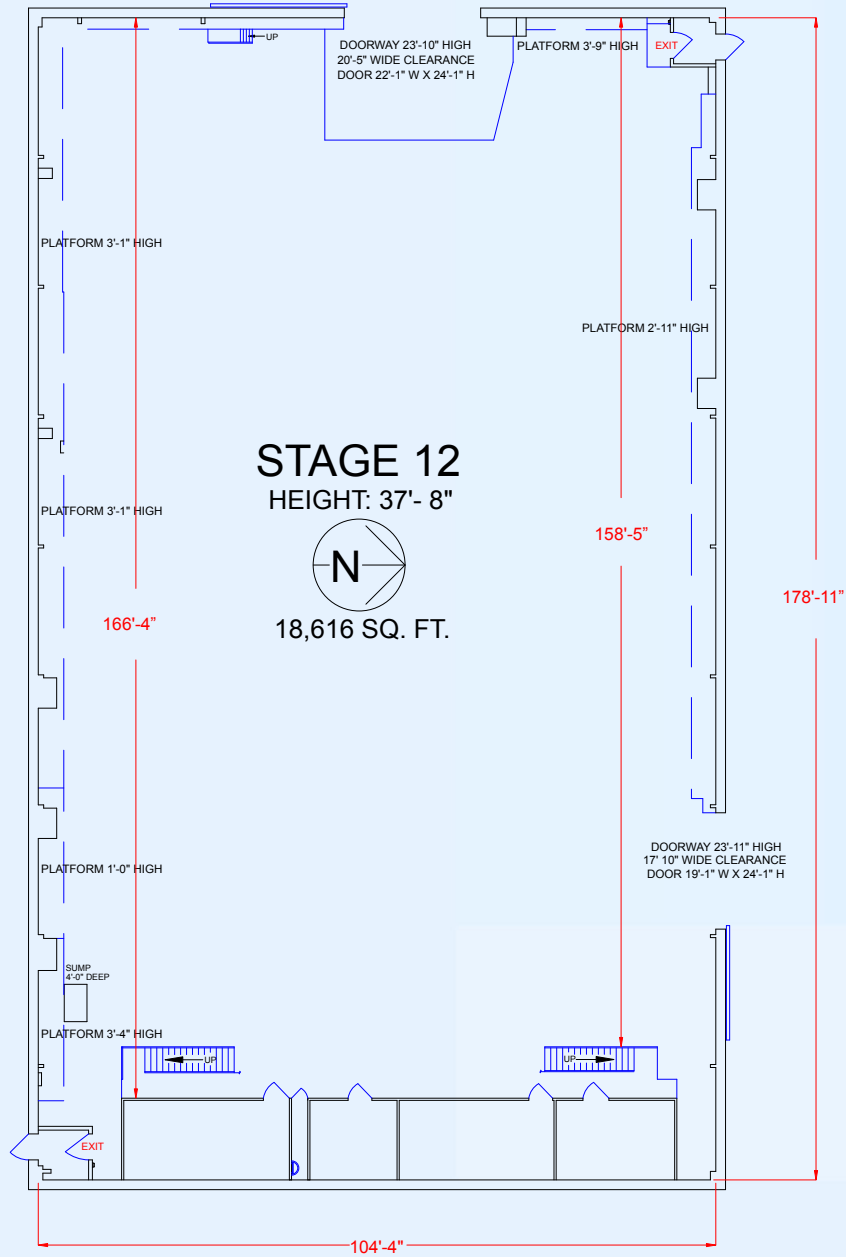
Miscellaneous:

- Only attached to Stage 10, one common wall
- Stage has columns
- Catwalks & wooden grid
- Floors: raised wooden

* Stage dimensions have been rounded to nearest foot



STAGE 12



Stage Size:

104' x 179' (18,616 square feet)
height 37'

Electrical:

AC Power: 1 can, 7200 amps, 120/240 volts, 6 circuits.

Permanent Fall Protection:

Horizontal Lifeline

Telcom:

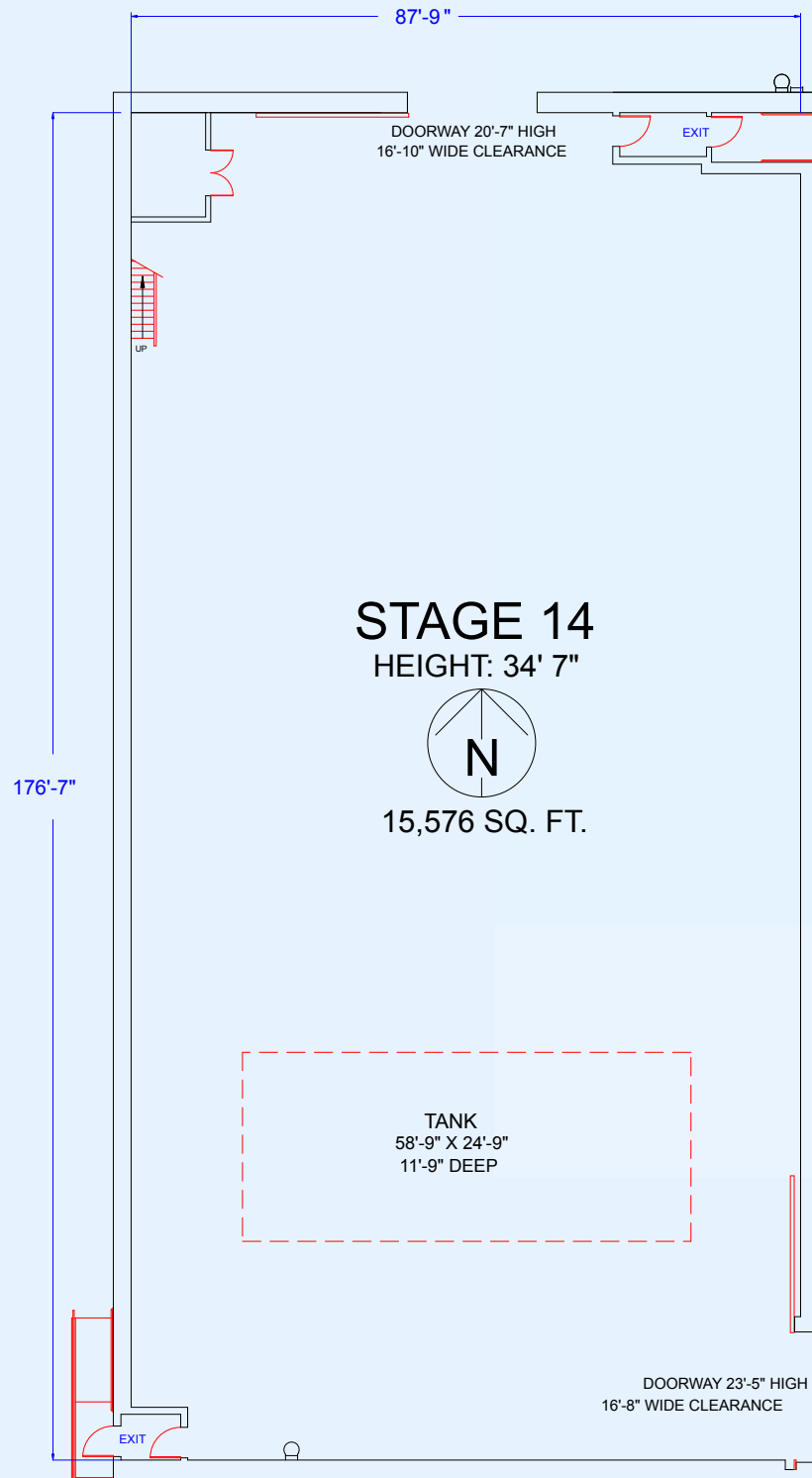
- High Speed Internet available
- Fiber Optic: 24 strands multimode; 12 strands single mode (to main distribution frame)

Miscellaneous:

- Stand alone stage, no common walls
- Support rooms: 6 downstairs, 2 upstairs (drawing available)
- Catwalks & wooden grid
- Floors: wood over concrete

* Stage dimensions have been rounded to nearest foot

STAGE 14



Stage Size:

88' x 177' (15,576 square feet)
height 34'

Electrical:

3 power cans, 9600 amps 120/240 volts, 9 circuits.

Tank/Pit:

Tank 58'-9" x 24'-9" x 11'-9" deep
(122,234 gallons)

- 4 days fill, filter & heat time (approximately)

Permanent Fall Protection:

Horizontal Lifeline

Telcom:

- High Speed Internet available
- Fiber Optic: 24 strands multimode; 12 strands single mode (to main distribution frame)

Miscellaneous:

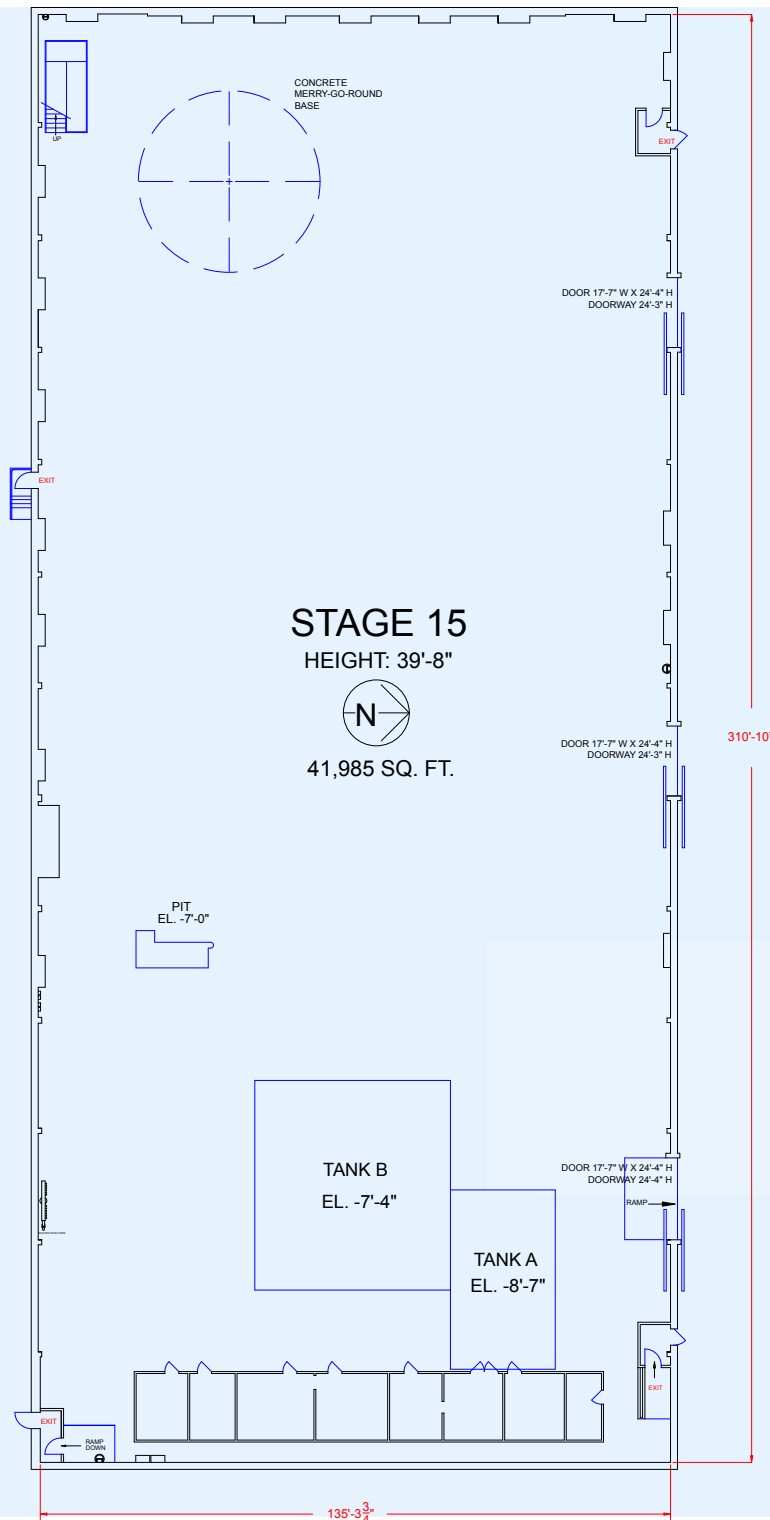
- Aluminum girders
- Catwalks & wooden grid
- Floors: wood over concrete

* Stage dimensions have been rounded to nearest foot



10202 WEST WASHINGTON BOULEVARD
CULVER CITY, CALIFORNIA 90232

STAGE 15



STAGE 15

HEIGHT: 39'-8"



41,985 SQ. FT.

Stage Size:

135' x 311' (41,985 square feet)
height 40'

Electrical:

3 power cans, 9000 amps 120/240 volts, 9 circuits.

Tank/Pits:

A) 37'-8" x 22' x 8'-7" deep (to floor); 37'-8" x 22' x 5'-2" deep (concrete, on grade)
Approximate capacity is 32,000 gallons. 40 hours fill, filter & heat time (approximate)

B) 45' x 40' x 7'-4" deep (to floor); 45' x 40' x 4'-10" deep (concrete, on grade). Approximate capacity is 67,000 gallons. 78 hours fill, filter & heat time (approximate)

Permanent Fall Protection:

Horizontal Lifeline

Telcom:

- High Speed Internet available
- Fiber Optic: 24 strands multimode; 12 strands single mode (to main distribution frame)

Miscellaneous:

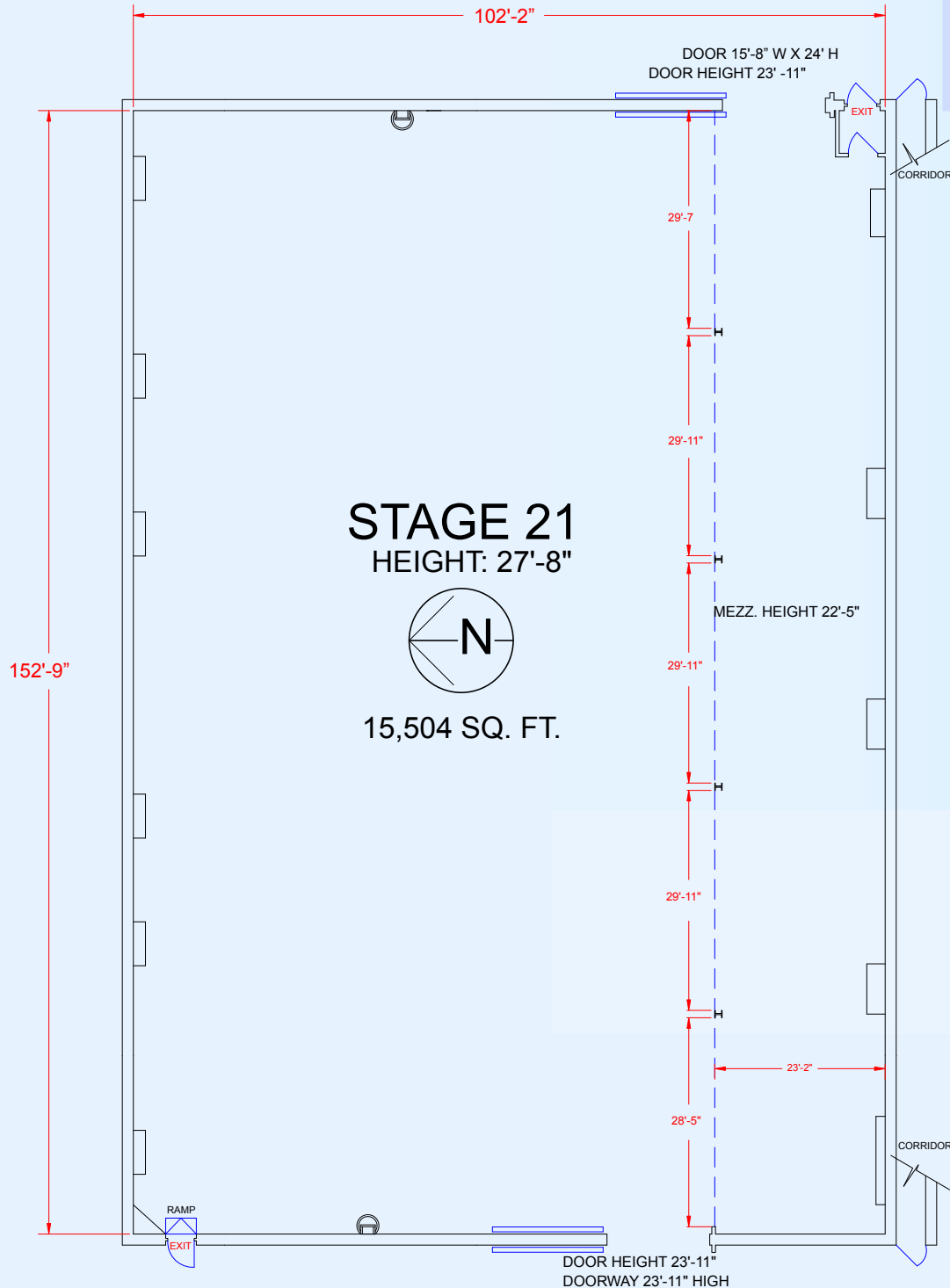
- Support rooms on stage (8 total)
- Lose 200 sq. ft of space in southeast corner of stage due to staircase to perms
- HVAC: Stage has central air (see rate schedule for costs)
- Catwalks & wooden grid
- Floors: raised wooden

* Stage dimensions have been rounded to nearest foot



10202 WEST WASHINGTON BOULEVARD
CULVER CITY, CALIFORNIA 90232

STAGE 21



Stage Size:

102' x 152' (15,504 square feet)
height 28'

Electrical:

1 power can, 7200 amps 120/240 volts,
6 circuits.

Permanent Fall Protection:

Horizontal Lifeline

Telcom:

- High Speed Internet available
- Fiber Optic: 24 strands multimode; 12 strands single mode (to main distribution frame)

Miscellaneous:

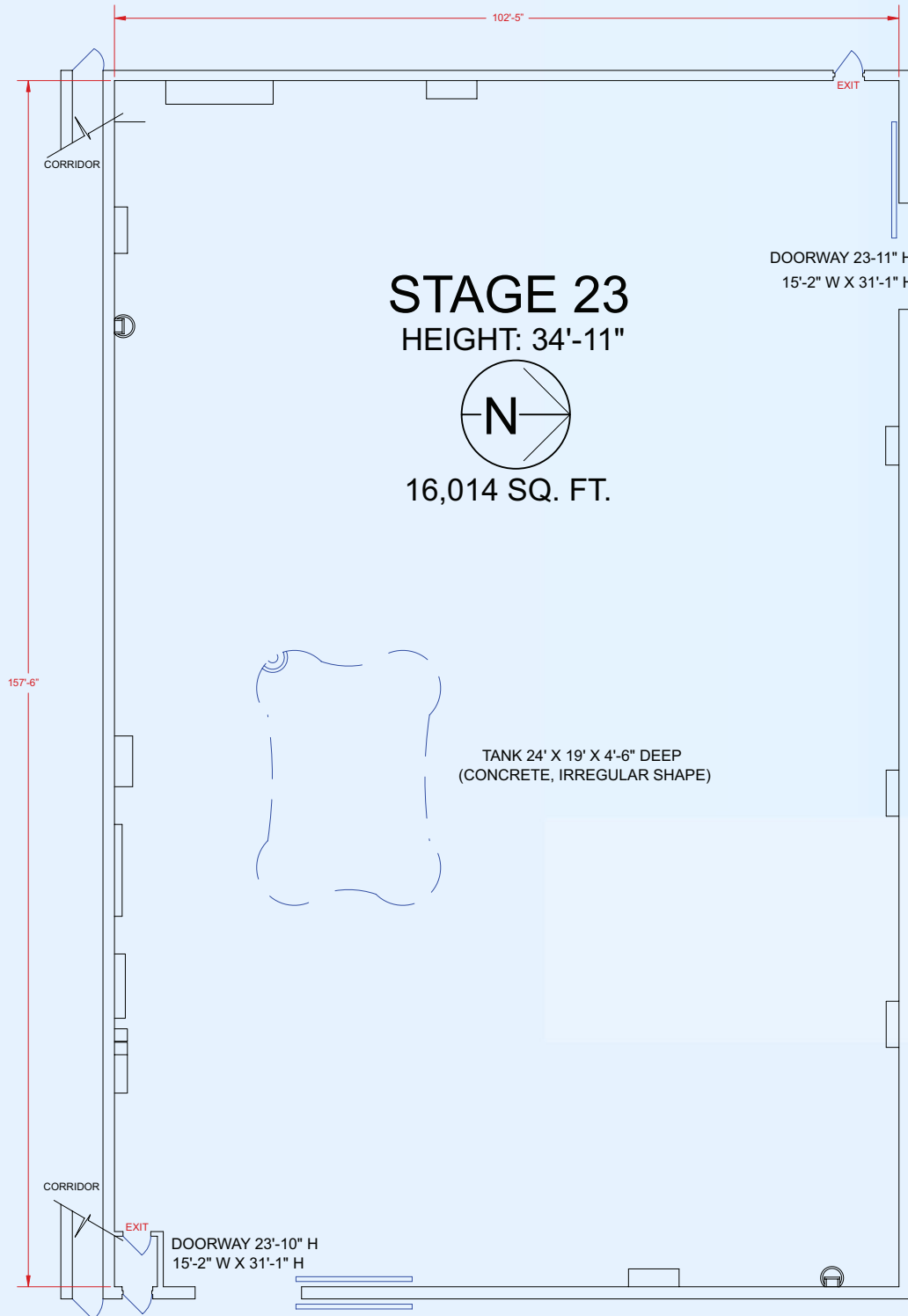
- Stage has columns
- Lose approximately 30' south side due to columns
- Catwalks & wooden grid
- Floors: raised wooden

* Stage dimensions have been rounded to nearest foot



10202 WEST WASHINGTON BOULEVARD
CULVER CITY, CALIFORNIA 90232

STAGE 23



Stage Size:

102' x 157' (16,014 square feet)
height 35'

Electrical:

1 power can, 7200 amps 120/240 volts, 6 circuits.

Pit/Pool:

- 24' x 19' x 4'-6" deep (concrete, irregular shape) approximate capacity is 14,900 gallons. 19 hours fill, filter & heat time (approximate)
- Large earthen pit (call for dimensions)

Permanent Fall Protection:

Horizontal Lifeline

Telcom:

- High Speed Internet available
- Fiber Optic: 24 strands multimode; 12 strands single mode (to main distribution frame)

Miscellaneous:

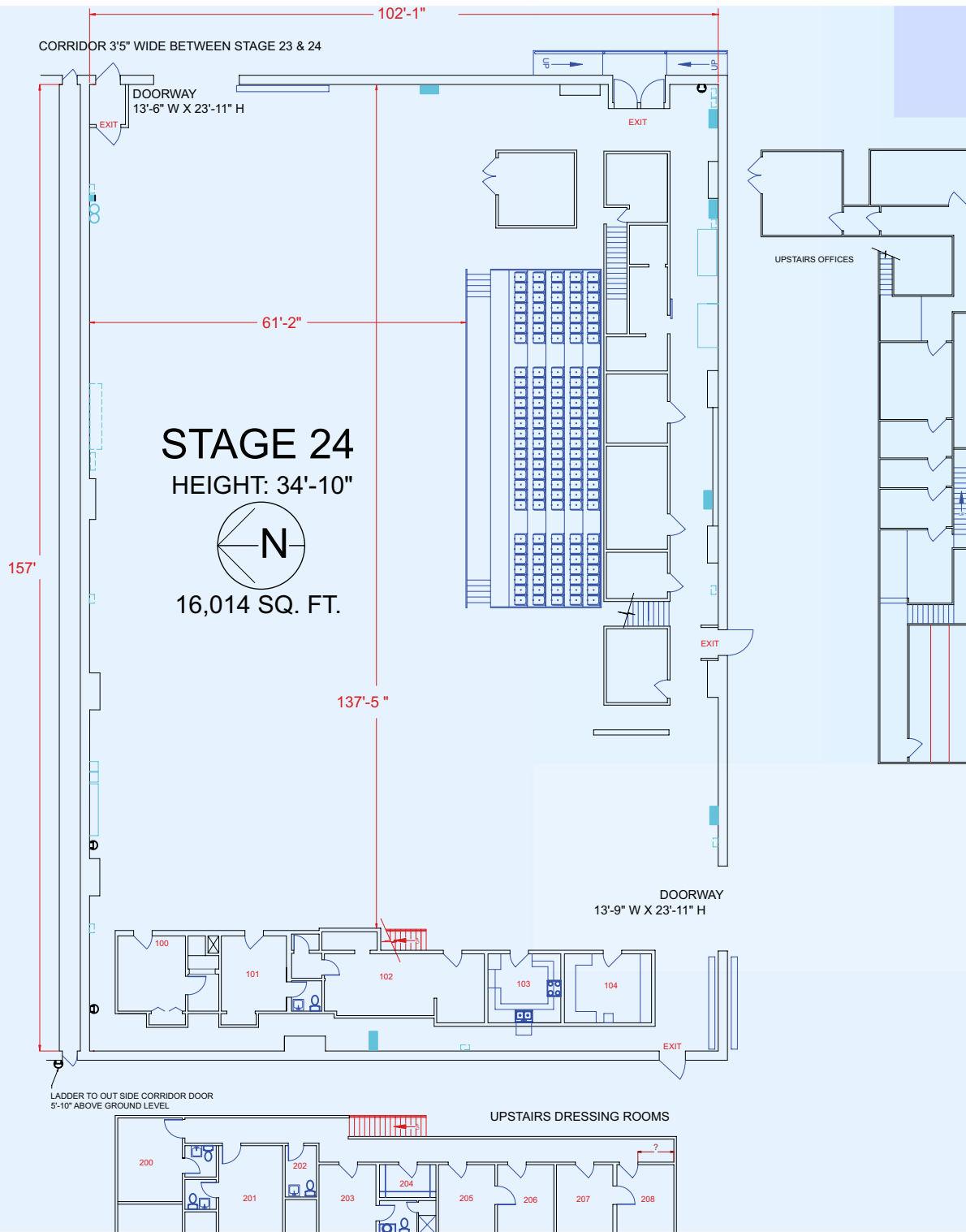
- Catwalks & wooden grid
- Floors: raised wooden

* Stage dimensions have been rounded to nearest foot



10202 WEST WASHINGTON BOULEVARD
CULVER CITY, CALIFORNIA 90232

STAGE 24



TV Stage Stage Size:

102' x 157' (16,014 square feet)
height 35'

Electrical:

1 power can, 7200 amps, 120/240 volts, 6 circuits.

Support rooms built-in, on stage include:

- 9 dressing rooms
- Prop & craft service kitchens
- Green room
- VIP rooms
- Wardrobe space
- Hair/makeup room
- Sound booth & control rooms
- Storage & gold rooms
- Drawings available

Permanent Fall Protection:

Horizontal Lifeline

Telcom:

- High Speed Internet available
- Fiber Optic: 24 strands multimode; 12 strands single mode (to main distribution frame)

Miscellaneous:

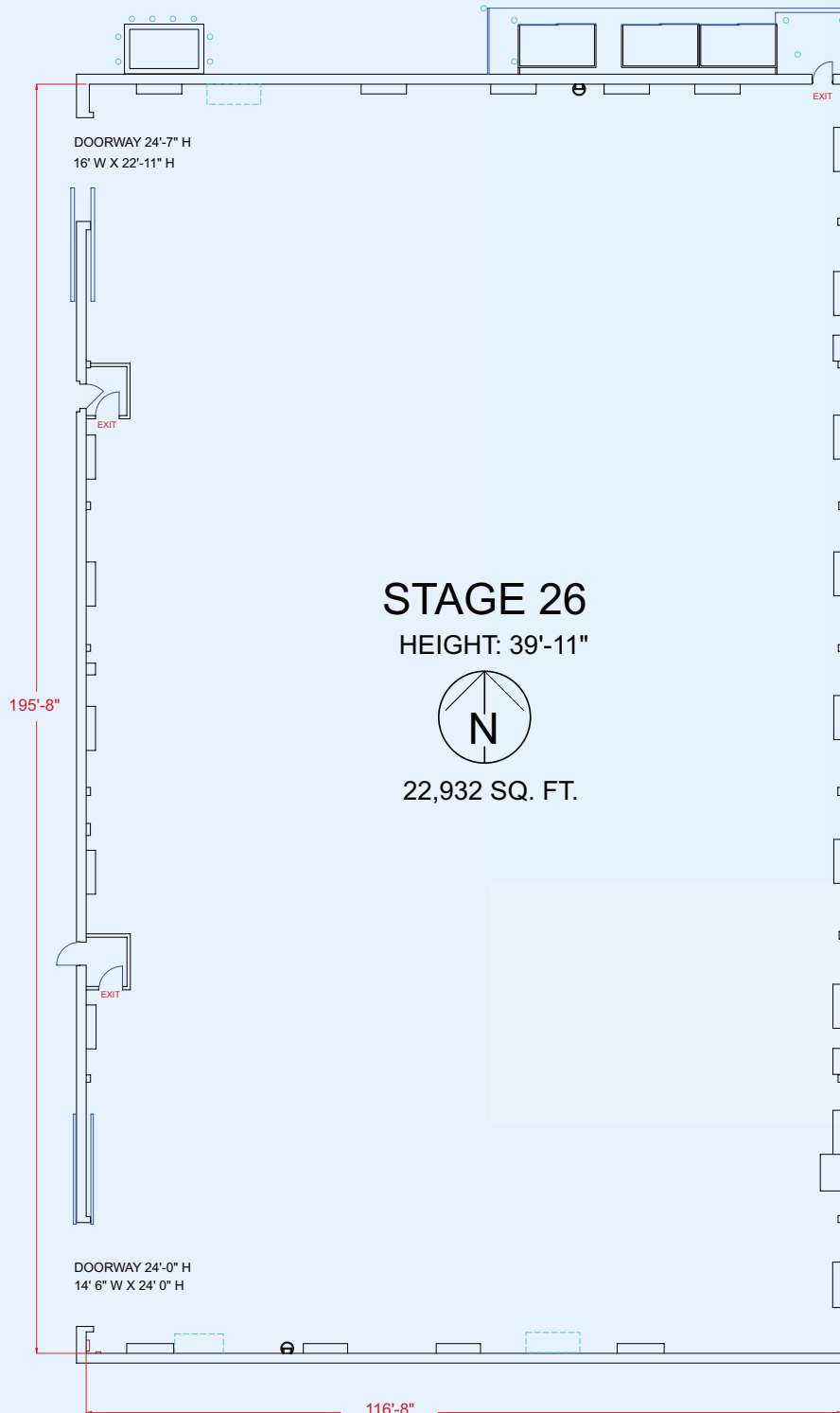
- Bleachers seat 184
- 2 stage walls painted black bottom 1/2
- Catwalks & wooden grid
- Floors: raised wooden

* Stage dimensions have been rounded to nearest foot



10202 WEST WASHINGTON BOULEVARD
CULVER CITY, CALIFORNIA 90232

STAGE 26



Stage Size:

117' x 196' (22,932 square feet)
height 40'

Electrical:

2 power cans, 9600 amps, 120/240 volts, 8 circuits.

Telcom:

- High Speed Internet available
- Fiber Optic: 24 strands multimode; 12 strands single mode (to main distribution frame)

Miscellaneous:

- Man door into Stage 27
- HVAC: Stage has central air (see rate schedule for costs)
- Catwalks & wooden grid
- Floors: raised wooden

* Stage dimensions have been rounded to nearest foot



10202 WEST WASHINGTON BOULEVARD
CULVER CITY, CALIFORNIA 90232

SONY PICTURES STUDIOS
310-244-6926

STAGE 27

Stage Size:

134' x 237' (31,758 square feet)
height 50'/80'

Electrical:

3 power cans, 9600 amps, 120/240 volts, 9 circuits.

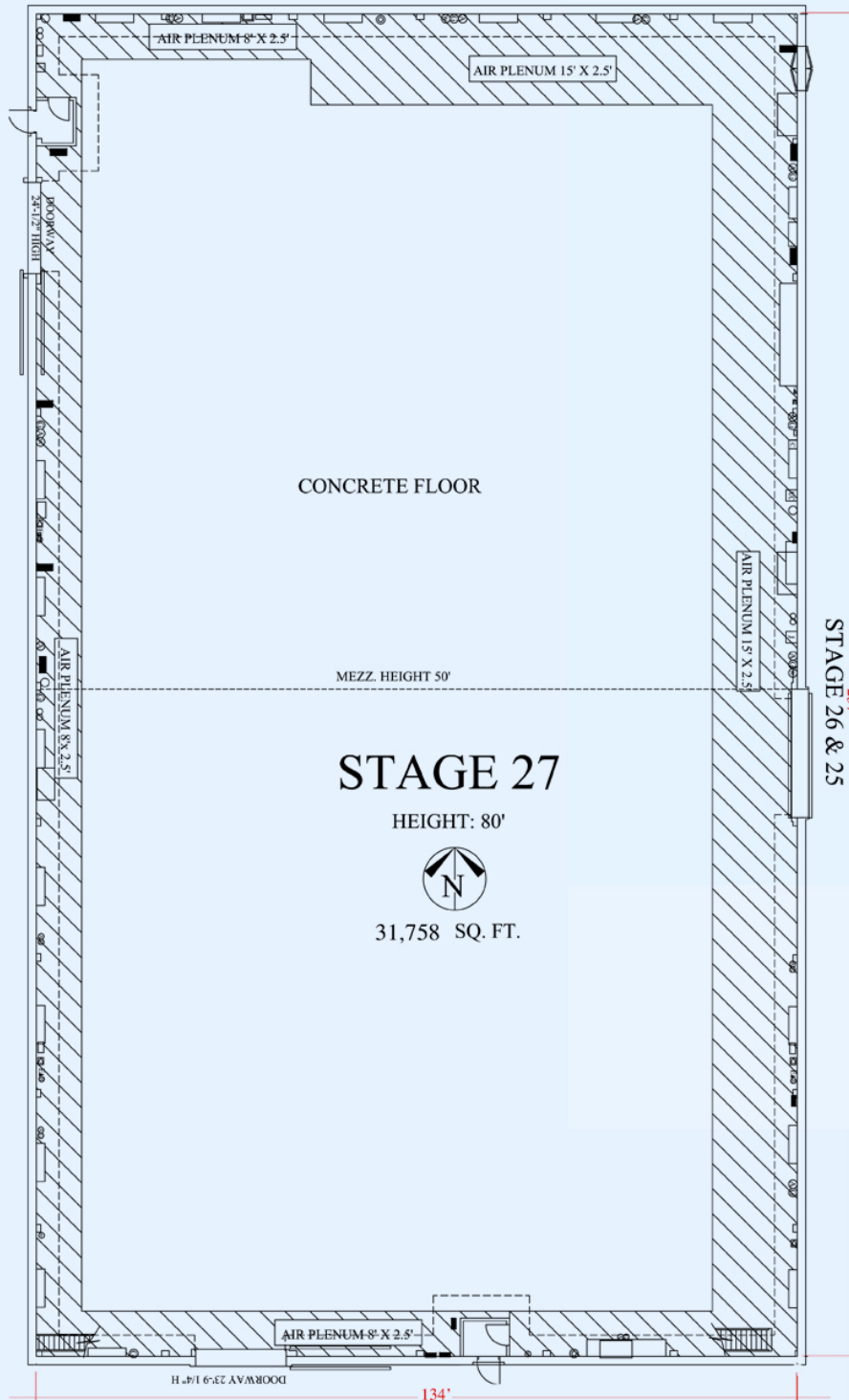
Telcom:

- High Speed Internet available
- Fiber Optic: 24 strands multimode; 12 strands single mode (to main distribution frame)

Miscellaneous:

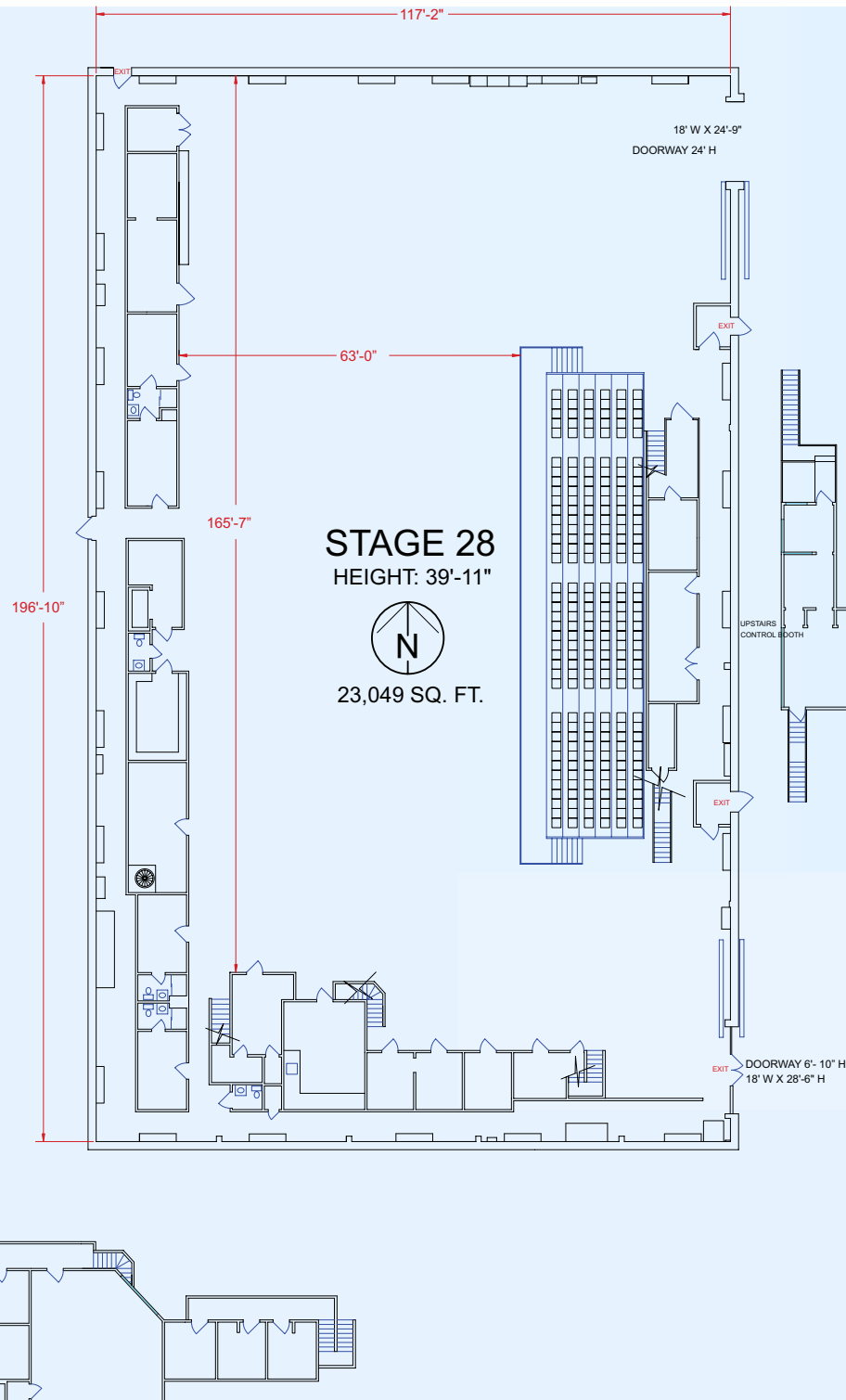
- Man door to Stage 26
- Big door to Stage 25
- HVAC: Stage has central air (see rate schedule for costs)
- Catwalks & wooden grid
- Floors: Wood over concrete

* Stage dimensions have been rounded to nearest foot



10202 WEST WASHINGTON BOULEVARD
CULVER CITY, CALIFORNIA 90232

STAGE 28



TV Stage Stage Size:

117' x 197' (23,049 square feet)
height 40'

Electrical:

2 power cans, 9600 amps, 120/240 volts, 8 circuits.

Support Rooms:

- 15 dressing rooms (includes: 6 "star" dressing rooms)
- Prop & Craft Service kitchen
- Green room
- Wardrobe office & storage space
- Tailor & laundry room
- Hair/makeup
- 2 dark rooms
- Storage & gold rooms
- Drawings available

Telcom:

- High Speed Internet available
- Fiber Optic: 24 strands multimode; 12 strands single mode (to main distribution frame)

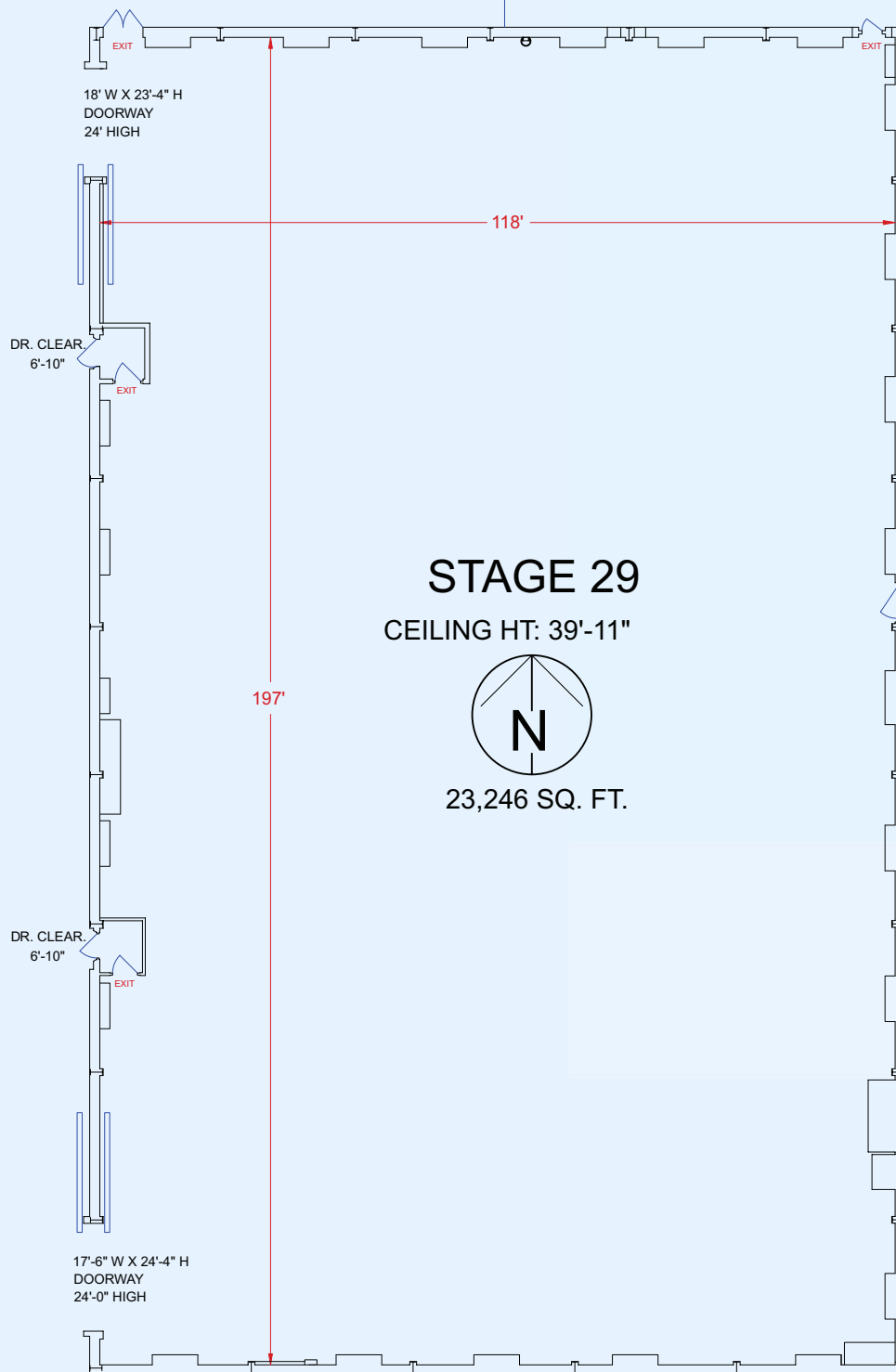
Miscellaneous:

- Audience seating
- Man door into Stage 29
- HVAC: Stage has central air (see rate schedule for costs)
- Catwalks & wooden grid
- Floors: raised wooden

* Stage dimensions have been rounded to nearest foot



STAGE 29



Stage Size:

118' x 197' (23,246 square feet)
height 40'

Electrical:

2 power cans, 9600 amps, 120/240 volts, 8 circuits.

Telcom:

- High Speed Internet available
- Fiber Optic: 24 strands multimode; 12 strands single mode (to main distribution frame)

Miscellaneous:

- Man door into stage 28
- HVAC: Stage has central air (see rate schedule for costs)
- Catwalks & wooden grid
- Floors: raised wooden

* Stage dimensions have been rounded to nearest foot



10202 WEST WASHINGTON BOULEVARD
CULVER CITY, CALIFORNIA 90232

STAGE 30

Stage Size:

132' x 236' (31,152 square feet)
height 50'

Electrical:

3 power cans, 9600 amps, 120/240 volts, 9 circuits.

Tanks:

- 90' x 90' x 10' deep with tank 20' x 30' x 19' deep (tank is inside larger tank on west side)
- Shallow tank: 90' x 20' x 2.4' (splash area)
- Approximate total capacity is 721,400 gallons, 7 days fill, filter & heat time (approximate)
- Steel traps in tank

Permanent Fall Protection:

Horizontal Lifeline

Telcom:

- High Speed Internet available
- Fiber Optic: 24 strands multimode; 12 strands single mode (to main distribution frame)

Miscellaneous:

- Black walls
- HVAC: Stage has central air (see rate schedule for costs)
- Catwalks & wooden grid
- Floors: wood over concrete (and over steel traps in tank areas)

* Stage dimensions have been rounded to nearest foot

