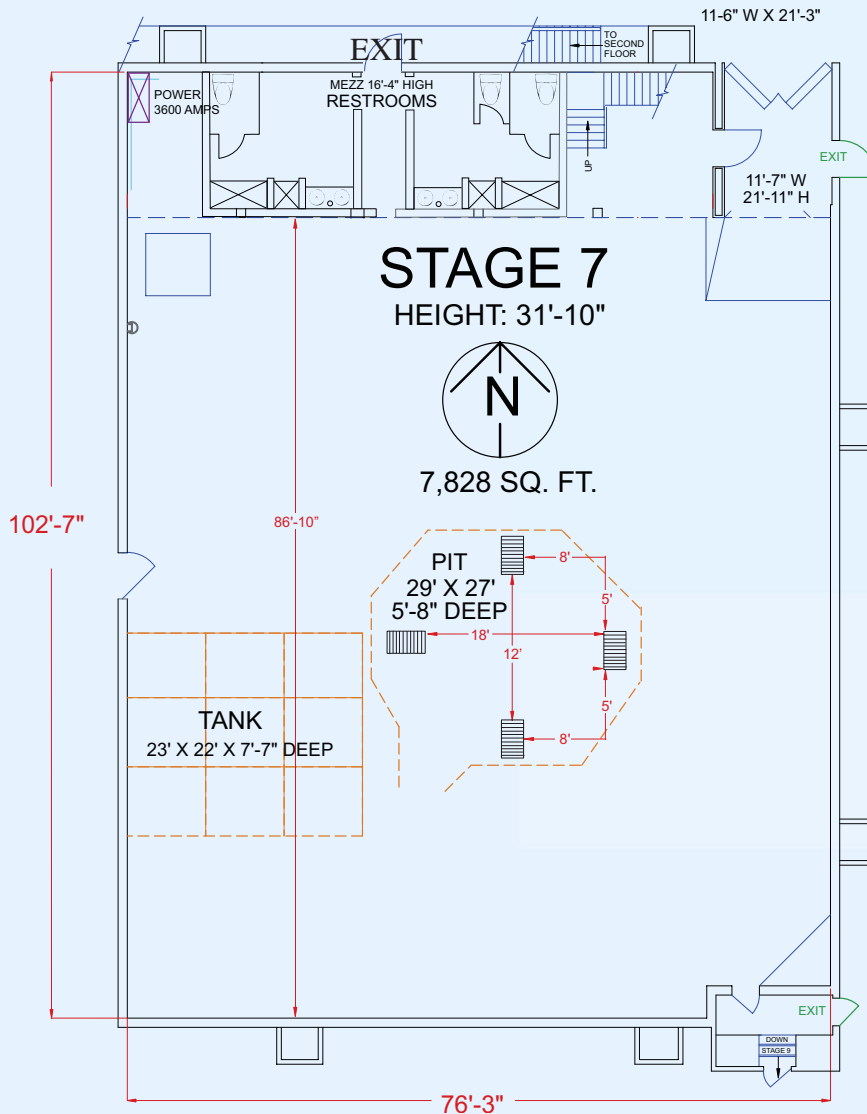
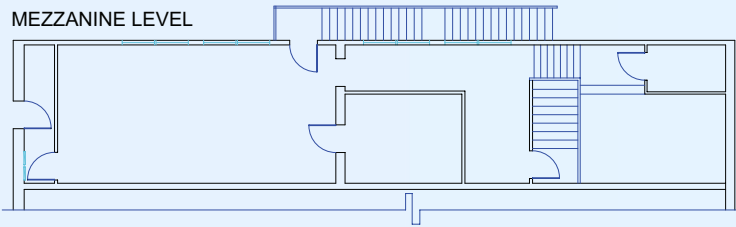


# STAGE 7

MEZZANINE LEVEL



## Stage Size:

76' x 103' (7,828 square feet)  
Height 32'

## Electrical:

1 power can, 3600 amps 120/240 volts, 3 circuits.

## Pits:

- Large irregular shaped earthen pit (29' x 27' x 5'-8" deep)
- Concrete pit: (23' x 22' x 7'-7" deep) – does not hold water

## Support Rooms:

Two floors, Additional Telephones, Restrooms

## Permanent Fall Protection:

(Horizontal Lifeline)

## Air Conditioning:

Permanent Air Conditioning, 15 tons

## Telcom:

- Permanent Wireless Internet
- DSL Hardline
- Fiber Optic: 24 strands multimode; 12 strands single mode (to main distribution frame)

## Miscellaneous

- Man door into Stage 8 & hallway to Stage 9
- Catwalks & Wooden Grid
- Floors: Raised Wooden (some concrete areas)
- Top braces on each side of stage affect height
- Lose 15'-9" in length due to columns
- Large pit in center with 4 passive vents directly through stage floor

\* Stage dimensions have been rounded to nearest foot