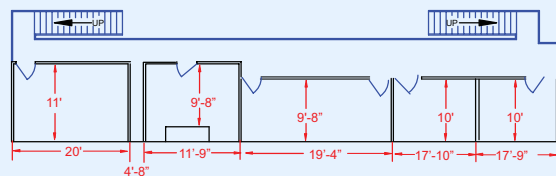
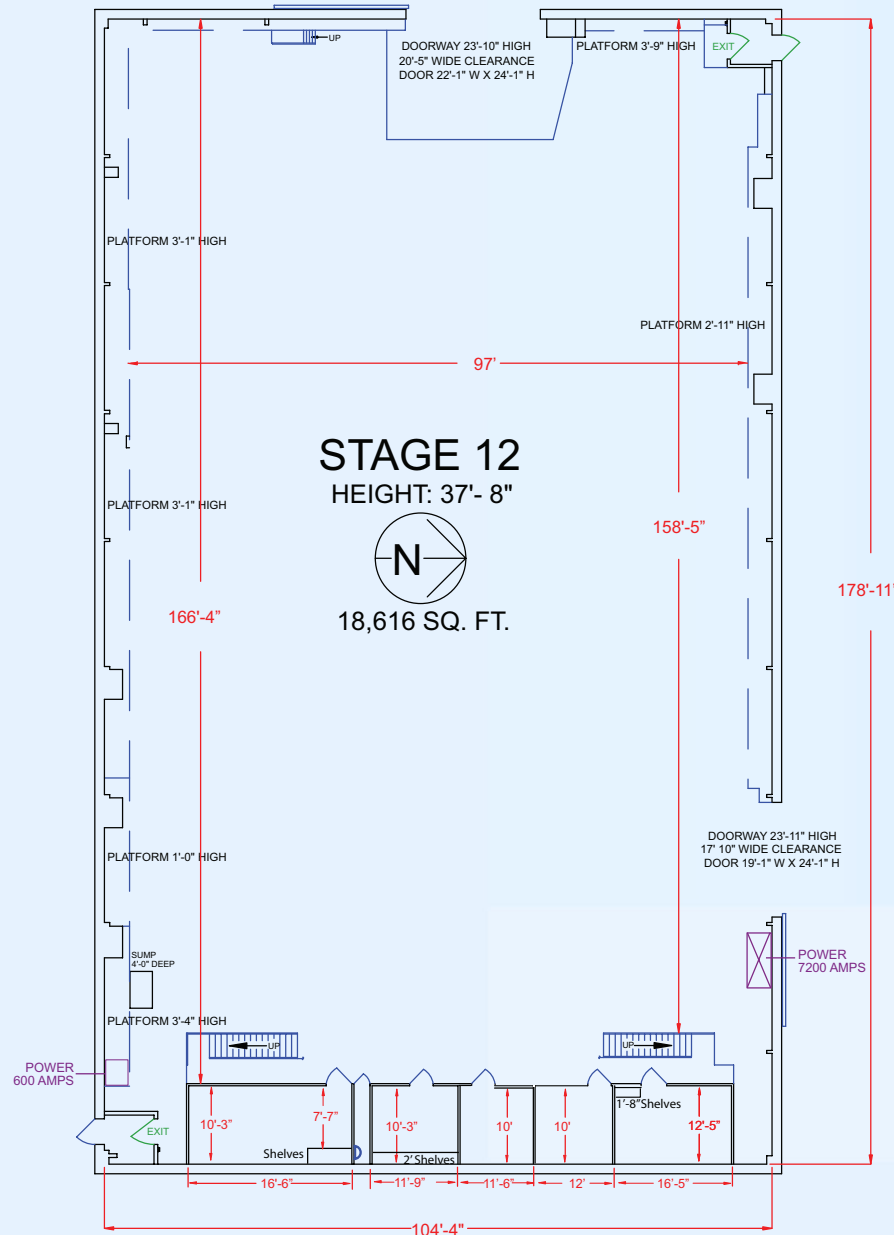


# STAGE 12



### Stage Size:

104' x 179' (18,616 square feet)  
Height 38'

### Electrical:

1 power can, 7200 amps, 120/240 volts, 6 circuits.

### Support Rooms:

Two floors, Additional Phones

### Permanent Fall Protection:

(Horizontal Lifeline)

### Air Conditioning:

Portable Air Conditioning Only

### Telcom:

- Permanent Wireless Internet
- DSL Hardline
- Fiber Optic: 24 strands multimode; 12 strands single mode (to main distribution frame)

### Miscellaneous:

- Stand alone stage - no common walls
- Usable space on stage is 87' x 146' (12702 sq. ft)
- Catwalks, Wooden Grid, and Steel Truss
- Floors: Wood over Concrete
- New Insulquilt

\* Stage dimensions have been rounded to nearest foot